

Trunk & Distribution Adapters

180° Socket Contact Installation Guide



Applicable Part Numbers

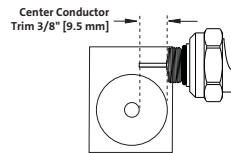
GL-180-SC-T	GL-180-SC-w/4.5-T
GL-180-SC-w/1.5-T	GL-180-SC-w/6-T
GL-180-SC-w/3-T	GL-180-SC-w/9-T

Recommended Tools

- 1 — 10" Adjustable Wrenches
- 1 — 3/4" Combination Wrench

1. Remove equipment port caps and loosen seizure screws to accept adapter pin. Verify length and trim the adapter pin to equipment manufacturer's specification.

End Marked Trim Guide



2. Using the trim gauge provided on the adapter, trim the pin of the entry connector to the required length.

3. Screw **Lock Nut A** back against the adapter body.

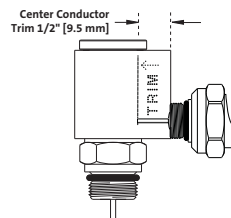
4. Screw the adapter into the equipment housing until finger tight. The o-ring should be inside the equipment port.

5. Position the adapter by backing the adapter out of the equipment port until desired alignment is achieved. (*NOTE: adapter should not be backed off more than one turn.*)

6. To adjust the angle of **Adapter Body B**, hold the adapter body and loosen **Lock Nut B**. Position adapter body to the desired position.¹

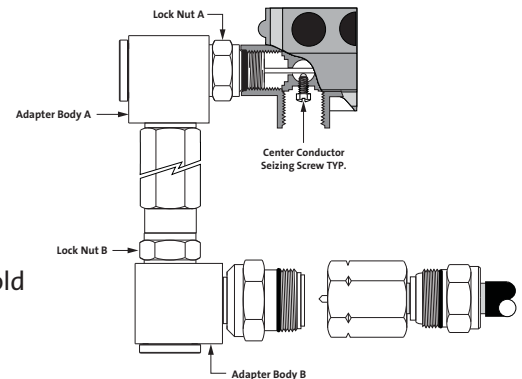
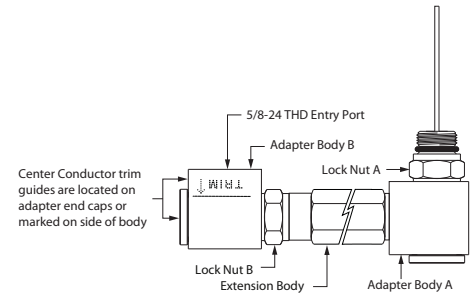
7. Thread the entry connector body into the adapter's entry port and tighten using two (2) wrenches. Complete entry connector installation onto cable per manufacturer's instructions.

Side Marked Trim Guide



8. If **Lock Nut B** was loosened hold **Adapter Body B** and wrench tighten **Lock Nut B** securely against extension body. Hold **Adapter Body A** rigidly and wrench tighten **Lock Nut A** securely against the female port.

9. Tighten seizure screws inside of the equipment as recommended by the equipment manufacturer. Replace port caps.



¹ Extension Adapters:

Tighten the extension into the equipment port. To adjust the adapter angle, hold the adapter body and loosen the lock nut. Position adapter body to the desired position.

Corning Gilbert Inc.

Broadband Products

5310 W. Camelback Rd.

Glendale, AZ 85301 U.S.A.

phone: 800 528 5567 (U.S. and Canada)

(01) 623 245 1050 (International)

fax: 800 344 6358

(01) 623 939 3538

website: www.corning.com/corninggilbert

e-mail: info-gilbert@corning.com